

# PHOTO CURL



A simple solution for Professional Photo



Photoshop CS3, CS4, CS5, cs6



Windows®



Mac®

---

# **User's Guide Photo Curl**

**[www.SPC-international.com](http://www.SPC-international.com)**

---

## **Index**

---

- 1.0 Introduction
- 2.0 System Requirement
- 3.0 Install “Photo Curl”
- 4.0 Workflow of “Photo Curl”

## 1.0 Introduction

The name of Photo Curl Editor speaks for itself. It's all about turn your regular photo into a work of art.

Photo Curl is a plugin for Photoshop that allows you to apply different curl effects directly onto your photos.

With this Photo Curl software you'll be able to make your pictures look even better than they do!

### 2.0 System Requirements

Photo Curl is perfectly compatible with Adobe Photoshop CS3, CS4, CS5 and CS6.

#### **WINDOWS PLATFORM**

Windows 1.8GHz or faster processor Microsoft® Windows® XP with Service Pack 2 (Service Pack 3 recommended) or Windows Vista® Home Premium, Business, Ultimate, or Enterprise with Service Pack 1 (certified for 32-bit Windows XP and 32-bit and 64-bit Windows Vista) 512MB of RAM (1GB recommended) 1GB of available hard-disk space for installation; additional free space required during installation (cannot install on flash-based storage devices) 1,024x768 display (1,280x800 recommended) with 16-bit video card Some GPU-accelerated features require graphics support for Shader Model 3.0 and OpenGL 2.0 DVD-ROM drive QuickTime 7.2 software required for multimedia features Broadband Internet connection required for online services\*

#### **MACINTOSH PLATFORM**

Mac OS PowerPC® G5 or multicore Intel® processor Mac OS X v10.4.11–10.5.4 512MB of RAM (1GB recommended) 2GB of available hard-disk space for installation; additional free space required during installation (cannot install on a volume that uses a case-sensitive file system or on flash-based storage devices) 1,024x768 display (1,280x800 recommended) with 16-bit video card Some GPU-accelerated features require graphics support for Shader Model 3.0 and OpenGL 2.0 DVD-ROM drive QuickTime 7.2 software required for multimedia features Broadband Internet connection required for online services\*

---

### 3.0 Install “Photo Curl”

#### For Windows XP and Windows Vista:

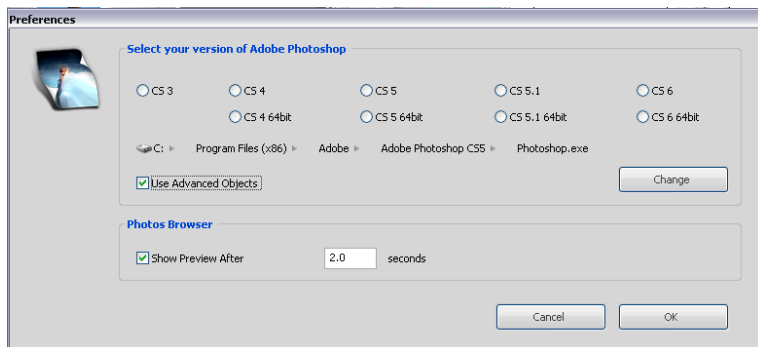
1. Place the DVD-ROM in the DVD-Drive.
2. The Install program should open the InstallShield window for “Photo Curl”, then follow the easy steps to install the software.

#### For Mac:

1. Place the DVD-ROM in the DVD-Drive.
2. Open DVD.
3. Double click on image file .dmg
4. The image file will be opened. Take and drag the folder Photo Curl onto the folder Application.

It is necessary to activate “Photo Curl” using the activation code which is included into the original packaging of the software.

After activation of “Photo Curl” you will be asked to set the preference.  
Connect “Photo Curl” with a desired version of Adobe Photoshop.



# User's Guide Photo Curl

## 4.0 Workflow of "Photo Curl"

Click on the icon of "Photo Curl" the connected version of Photoshop opens automatically.

Library of the effects

Preference



- \* Open a photo.
- \* Double click a thumbnail of some effect.

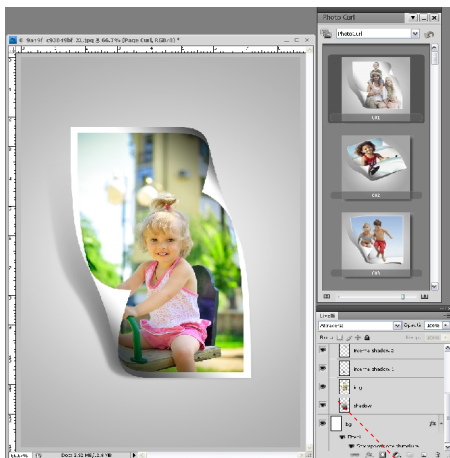
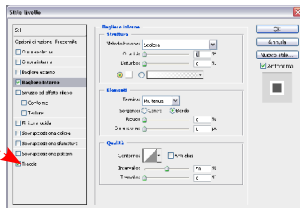


Preview of the effect



## User's Guide Photo Curl

Here you can choose the edge color.  
When you don't choose any color the  
the edge will be white.



All layers are opened.  
So it is possible to do some modifications







Photoshop CS3, CS4, CS5, cs6

Create eye-popping Pictures

Give your photos a little extra something with our Photo Curl program. Turn any regular photo into a work of art. Simply take a photo, open it with our program and you'll have pictures look even better than they do!

# PHOTO CURL

Windows®



Mac®



For information and order, please contact:  
 International SPC srl  
 Via G. B. Della Salle, 2 80136 Na (Italy)  
 Tèl. (+39) 0815447792  
 Fax. (+39) 0815443684  
[www.SPC-international.com](http://www.SPC-international.com)

